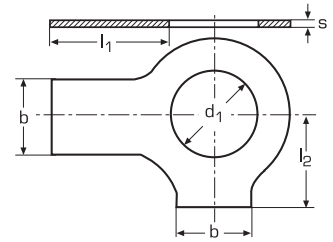



# DIN 463

**PN 82022**


Podkładka odginana  
dwuflapkowa  
**A2 / A4**

wymiar	waga 100 szt. (kg)	d1	l1	l2	b	s	
<b>M 4</b>	0,033	4,3	14,0	6,5	5,0	0,38	100
<b>M 5</b>	0,055	5,3	16,0	8,0	6,0	0,5	100
<b>M 6</b>	0,080	6,4	18,0	9,0	7,0	0,5	100
<b>M 8</b>	0,171	8,4	20,0	11,0	8,0	0,75	100
<b>M 10</b>	0,251	10,5	22,0	13,0	10,0	0,75	100
<b>M 12</b>	0,441	13,0	28,0	15,0	12,0	1,0	100
<b>M 14</b>	0,509	15,0	28,0	16,0	12,0	1,0	100
<b>M 16</b>	0,630	17,0	32,0	18,0	15,0	1,0	100
<b>M 18</b>	0,824	19,0	36,0	20,0	18,0	1,0	50
<b>M 20</b>	0,900	21,0	36,0	21,0	18,0	1,0	50
<b>M 22</b>	1,000	23,0	42,0	23,0	20,0	1,0	50
<b>M 24</b>	1,200	25,0	42,0	25,0	20,0	1,0	50
<b>M 27</b>	2,530	28,0	48,0	29,0	23,0	1,6	50
<b>M 30</b>	3,140	31,0	52,0	32,0	26,0	1,6	20
<b>M 33</b>	3,560	34,0	56,0	34,0	28,0	1,6	20
<b>M 36</b>	4,250	37,0	60,0	38,0	30,0	1,6	20
<b>M 39</b>	4,970	40,0	64,0	41,0	32,0	1,6	10