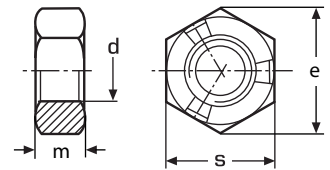


# DIN 980

**EN 27042**  
**ISO 7042**  
**PN 82176**

Nakrętka samozabezpieczająca  
z gwintem odkształconym  
**A2 / A4**



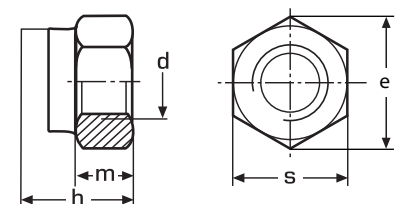
d	waga 100 szt. (kg)	s	e	m	
<b>M 3</b>	0,034	5,5	6,01	2,4	1000
<b>M 4</b>	0,081	7,0	7,66	3,2	1000
<b>M 5</b>	0,123	8,0	8,79	4,0	500
<b>M 6</b>	0,250	10,0	11,05	5,0	200
<b>M 8</b>	0,520	13,0	14,38	6,5	100
<b>M 10</b>	1,170	17,0	18,9	8,0	50
<b>M 12</b>	1,730	19,0	21,1	10,0	50
<b>M 14</b>	2,500	22,0	24,49	11,0	50
<b>M 16</b>	3,330	24,0	26,75	13,0	50
<b>M 18</b>	4,940	27,0	29,56	15,0	25
<b>M 20</b>	6,440	30,0	32,95	16,0	25

Waga 100 sztuk /kg

# DIN 982

**PN 82175**

Nakrętka samozabezpieczająca  
z wkładem poliamidowym  
**A2 / A4**



d	waga 100 szt. (kg)	s	e	m	h	
<b>M 4</b>	0,100	7,0	7,66	3,6	4,7	200
<b>M 5</b>	0,140	8,0	8,79	4,4	6,3	200
<b>M 6</b>	0,310	10,0	11,05	4,9	8,0	200
<b>M 8</b>	0,600	13,0	14,38	6,44	9,5	200
<b>M 10</b>	1,170	17,0	18,9	8,04	11,5	100
<b>M 12</b>	1,660	19,0	21,1	10,37	14,0	50
<b>M 14</b>	2,100	22,0	24,49	12,1	16,0	50
<b>M 16</b>	3,780	24,0	26,75	14,1	18,0	25
<b>M 20</b>	6,800	30,0	32,95	16,9	22,0	25
<b>M 24</b>	12,700	36,0	39,55	20,2	28,0	25