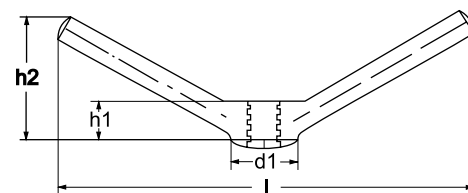


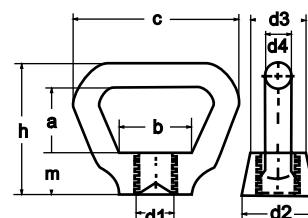
# DIN 80701



Nakrętka dociskowa  
**A4**

d	l	h1	h2	d1
M 16	240,0	25,0	75,0	40
M 20	240,0	25,0	75,0	40
M 24	240,0	25,0	75,0	40

# DIN 80704



Nakrętka pałkowa  
**A4**

d1	a	b	c	d2	d3	d4	h	m
M 6	15,0	14,0	25,0	14,0	11,5	5,0	28,0	8,0
M 8	20,0	18,0	32,0	18,0	15,0	6,5	36,0	10,0
M 10	25,0	23,0	42,0	23,0	18,0	8,0	50,0	12,0
M 12	27,0	27,0	48,0	24,0	20,0	10,0	52,0	15,0
M 16	29,0	32,0	56,0	30,0	24,0	12,0	59,0	18,0
M 20	32,0	36,0	64,0	36,0	28,0	13,0	66,0	21,0
M 24	36,0	45	75,0	45,0	36,0	14,0	76,0	25,0