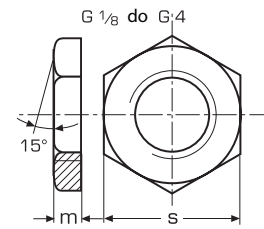


DIN 431

Nakrętka rurkowa
A2 / A4



d	waga 100 szt. (kg)	s max	e min	m min	
G 1/8	1,160	19,0	20,88	6,0	100
G 1/4	1,420	22,0	23,91	6,0	100
G 3/8	2,610	27,0	29,56	7,0	50
G 1/2	3,640	32,0	35,03	8,0	50
G 5/8	3,100	32,0	35,03	8,0	50
G 3/4	4,234	36,0	39,55	9,0	50
G 7/8	5,400	41,0	45,20	9,0	50
G 1	8,130	46,0	50,85	10,0	50
G 1 1/4	11,700	55,0	60,79	11,0	50
G 1 1/2	13,400	60,0	66,44	12,0	50
G 2	27,700	75,0	82,60	13,0	50